

PTH

speedy

Perfektion is not a matter of size

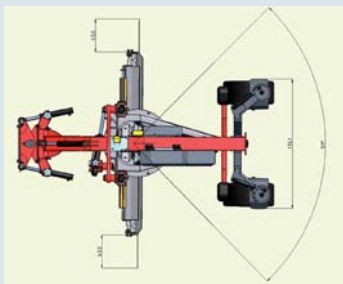
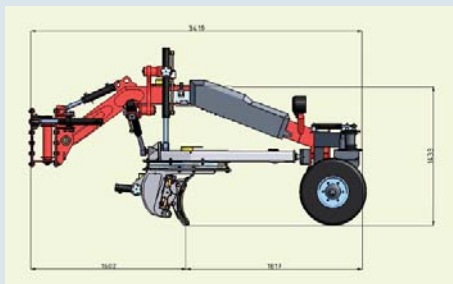


www.pthcrusher.com

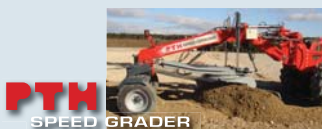
PTH products machines are used throughout the world in some of the most difficult working conditions. We give you technical know-how, backed by 20 years of experience in engineering and road building.

Technical data:

Carrier vehicle	from 2t upwards
Turntable	ball bearing turntable
Turntable diameter	880mm
Turning range	91 degrees
Blade	made of wear-resistant, high-grade steel changeable, split blade and edge cutter
Length of blade	2000mm, 2400mm, 2600mm, 3000mm
Depth/thickness of blade	520/20mm
Depth/thickness of cutter	150/20mm
Blade adjustment	Movement left/right 450mm max
Angle of repose	47 degrees
Max. lift above ground	270mm
Max. excavation depth	290mm
Cutting angle adjustment	Hydraulic 45° degrees
Hydraulic load sensing	Hydraulic block with PTHtronic for controlling the blade accurately and simply. By simply replacing a valve, you can work even when the load sensing is not present.
Steering	Freely rotating wheels, with positive steering system if required
Front axle	floating axle with freely rotating wheels
Unladen weight	1550 kg



Subject to technical modifications.



PTH

products

Profiteam Holzer Ges.m.b.H
 Lechen 14
 8692 Neuberg/Mürz (Austria)
 phone: +43 (0)3857 80530-0
 fax: +43 (0)3857 80530-4
 e-mail: office@pthcrusher.com



www.pthcrusher.com